



THE HUSTLER Zs: BE DIFFERENT. BE BETTER.

With an extremely wide footprint, the lowest seat height in the industry, and idealized placement of weight over the drive tires, Hustler Zs & Super Zs both deliver superb machine balance, resulting in improved traction and exceptionally responsive handling. In fact, the new Hustler Zs & Super Zs handle better on slopes than any other midmount rider. Because of its heavier construction the Hustler Zs & Super Zs will perform like a mountain goat on the most intimidating inclines.



At the same time, the Z incorporates all the details of Hustler design, the extra added touches that distinguish this mower from any other Z-rider out there.



The 9-bushel BAC-VAC™ fiberglass catcher empties from the driver's seat and features a flow-through venting system

- Thicker foam padding on steering levers for ideal comfort in any operating position
- Seat and steering levers are adjustable to guarantee a perfect fit for nearly any operator
- Very high blade-tip speed for superior quality of cut and ideal distribution of clippings
- Cutting heights from 1" to 5" in 1/4" increments.
- 1" spindle shaft for maximized durability
- Oil cooler with cooling fan on the Super Z

Demo a Super Z or Hustler Z today. Waiting for you will be the most durable, most productive, most feature-rich Z-rider on the market. At one of the industry's lowest purchase prices among 60-inch-deck models – legendary Hustler performance and reliability at a very affordable price.

Experience the difference.

Hustler Z™ and Super Z™ Specifications

Engine Specifications

	Honda	Kawasaki	Kawasaki	Kawasaki LC	Kohler	Kohler	Kohler EFI
Horsepower	24	23	25	26	27	30	28
No. of Cylinders	2	2	2	2	2	2	2
Displacement	40.9 cu in (670 cc)	41.2 cu in (675 cc)	41.2 cu in (675 cc)	45.5 cu in (745 cc)	44.0 cu in (725 cc)	44.0 cu in (725 cc)	44.0 cu in (725 cc)
Compression Ratio	8.3:1	8.1:1	8.1:1	8.6:1	9.0:1	9.0:1	9.0:1
Max. Torque	37.5 ft lbs @ 2500 rpm	37.0 ft lbs @ 2400 rpm	41.0 ft lbs @ 2400 rpm	43 ft lbs @ 2400 rpm	42.7 ft lbs @ 3000 rpm	47.1 ft lbs @ 2200 rpm	44.8 ft lbs @ 2200 rpm

Starter 12-volt (8 kw), solenoid shift positive engagement
Ignition Electronic
Charging System 12-volt, 15-amp
Fuel Filter Replaceable, automotive-type
Air Filter Heavy-duty air cleaner to extend the service interval for excessive, dirty applications and improved performance
Cooling Air cooled, Fly-wheel fan
Governor Mechanical

TRACTION DRIVE SYSTEM
Type Dual hydrostatic. Individual pumps power two direct-drive wheel motors. Hydrostatic system operates on 10W40 motor oil. Super Z features transmission drive (oil) cooler for increased system life.
Pumps Two variable displacement, axial-piston type. Each pump powers one drive-wheel motor. Hydro-Gear BDP21 (Super Z), Hydro-Gear BDP10 (Hustler Z)
Pump Drive V-belt drive from engine crankshaft
Hydraulic Lines Stainless-steel, high-pressure lines with Parker Seal-Lok™ O-Ring Face-Seal fittings. Hydraulic lines and fittings guaranteed to never leak!
Final Drive Direct-drive high-torque wheel motors. One for each drive wheel. White CE 18 (Super Z), Ross MB 15 (Hustler Z)

Filter Spin-on type; 25 micron (Super Z), 40 micron (Hustler Z).

Ground Speed Infinitely variable:
 Forward: Super Z: 0-15 mph (0-22.53 kph),
 Hustler Z: 0-9 mph (0-14.48 kph)
 Reverse: Super Z: 0-7.5 mph (0-12.07 kph)
 Hustler Z: 0-5 mph (0-8 kph)

Steering Twin-lever SmoothTrak™ steering provides independent control of each drive wheel. Speed, forward, reverse, brake, and turns are all controlled with hand-operated controls
Turning Radius True zero degree. Turns within its own length. Counter-rotating, independent drive wheels

Brakes
Service: Hydrostatic dynamic braking
Parking: Automotive-style drum brakes. When steering levers are placed in neutral position, integral park brakes are automatically engaged

Mower Drive Single V-belt drive from engine with electric clutch. Spring tension idler for extended belt life.

TIRES: Front: 13 x 6.50 – 6, rib tread
 Drive: 54" in 23 x 9.50 – 12, turf tread
 60 & 72" in 24 x 12.00 – 12, turf tread

CAPACITIES:
Fuel System: 14.4 US gal (54.5 l)
Hydraulic Oil: Super Z 2 US gal (7.57 l)
 Hustler Z 1.5 US gal (5.7 l)

DIMENSIONS: Height: 39 in (99 cm)
W/54 in Deck
 Length: 77 in (195.58 cm)
 Overall width: 55 in (139.7 cm) w/dischARGE chute up
 Tire-to-tire width: 52 in (132.08 cm)
 Weight: 1180 lbs (535.24 kg)

W/60 in Deck Length: 77 in (195.58 cm)

Overall width: 61 in (154.94 cm) w/dischARGE chute up
 Tire-to-tire width: 52 in (132.08 cm)
 Weight: 1212 lbs (549.75 kg)
W/66 in Deck Length: 79 in (200.66 cm)
 Overall width: 67 in (170.18 cm) w/dischARGE chute up
 Tire-to-tire width: 59 in (149.86 cm)
 Weight: 1254 lbs (568.8 kg)
W/72 in Deck Length: 81 in (205.74 cm)
 Overall width: 73 in (185.42 cm) w/dischARGE chute up
 Tire-to-tire width: 59 in (149.86 cm)
 Weight: 1296 lbs (587.86 kg)

SAFETY FEATURES Operator presence system connected to deck and drive clutches. Stabilizer rollers at rear of tractor

SEAT
Standard: Molded-vinyl seat with armrests. Fore and aft adjustment
Optional: Molded-vinyl suspension seat with armrests. Fore and aft adjustment

CONSTRUCTION: Mainframe is 1.5 in x 3 in x .187 in (3.8 cm x 7.62 cm x .47 cm) rectangular steel tubing with internal gusset in frame bend
Drive motors mounted to .179 in (.45 cm) welded steel. Front caster wheels mounted with roller bearings on each wheel. Front caster forks are .5 in (1.27 cm) steel

DECK LIFT: Foot-operated deck height adjustment. Pin for setting height, detent for transport position

CONTROLS: Hand-operated choke/throttle, ignition switch, electric mower clutch. Integrated parking brakes

INDICATORS: Hour meter, engine warning light
CUP HOLDER: Two cup holders molded into the left side fuel tank. Accommodates nearly any cup size including Big Gulp™

MOWING DECKS
54", 60", 66", and 72" Side-Discharge Decks
Type Free-floating mower using three blades with center blade to the front. Mower is suspended at the corners. Includes 6 deck-mounted rollers to improve flotation in rolling and uneven terrain.
Deck Lift Raise and lower deck from driver's seat with simple foot-operated deck height adjustment. Pin for setting height, transport position. Change cutting heights, hop curbs and trailer more easily.
Construction 7 gauge deck plate with an 11-gauge deck plate doubler with 7-gauge triplers at each spindle mount (nearly 1/2-in thick!) Solid 1-1/2 in x 1/2 in flat steel flat bars reinforce impact areas on trim edges. 7-gauge reinforced front edge. Lifetime warranty on leading edge of deck. Steel deck housing is 5.80 in (10.16 cm) deep to provide room for high-capacity mowing. Molded rubber discharge chute.
Cutting Heights Foot-operated deck height adjustment. Pin for setting height, detent for transport position. Height adjustment in .25 in increments from 1 in to 5 in (2.55 cm to 12.7 cm).

Mowing Blades Heavy-duty, heat-treated, high-lift steel blades
 54 in: 18.50 in x 2.50 in x .203 in flat blade, high sail Fusion™ blade
 60 in: 20.50 in x 2.50 in x .203 in flat blade, high sail Fusion™ blade
 66 in: 22.50 in x 2.50 in x .203 in flat blade, high sail Fusion™ blade
 72 in: 24.50 in x 2.50 in x .230 in flat blade, high sail Fusion™ blade

Blade Tip Speed 54 in: 18,400 fpm

Blade Drive V-belt drive to all three spindles. Spring tension idler pulley.
Spindles Machine ductile housing, 1 in (2.5 cm) diameter high carbon steel shafts and sealed ball bearings. 3-year warranty on spindle bearings.
Flotation Suspended mower floats on four spring-assisted chains. 6 anti-scalp wheels are standard.
Discharge Chute Molded rubber. Over-center design allows for chute to be folded up for improved trailering or to pass thru gates, etc.
Width of Cut
 54 in: 54 in (137.16 cm)
 60 in: 60 in (152.4 cm)
 66 in: 66 in (167.64 cm)
 72 in: 72 in (182.88 cm)

Trim Capacity (left side)
 54 in: 0 in (0 cm)
 60 in: 3 in (7.62 cm)
 66 in: 4 in (10.16 cm)
 72 in: 7 in (17.78 cm)



ACCESSORIES
BAC-VAC™ Catcher Rear-mounted, 9-bushel hopper is dumped from the seat without leaving the machine. Blower is powered from right-side deck spindle (no pony engine required). Hopper and blower can be added or removed in seconds.
Mulch Kit Easiest-to-install mulch kit on the market! Recycles clippings under deck allowing clippings to be cut and recut, then discharged down into the grass. Reduces handling of clippings, improves appearance, and recycles nutrients back to the soil.
Air-Control Kit Can be used when catching or mulching capacity mowing. Molded rubber discharge chute.
Stripping Kit Steel roller mounts to rear of deck. Produces beautiful striping patterns in lawn.
Flex Forks™ Shock-absorbing front caster wheel forks for a smooth ride and a smoother cut.
Hydraulic Deck Lift Kit Raise and lower the deck with the flip of a switch.
Hitch Kit Optional bolt-on hitch with 7/8-inch hole. Will accept any standard ball.
 Specifications subject to change without notice.

Super Z XR-7 & Hustler Z XR-7



Announcing the newest trend in Z-riders: THE SOUND BARRIER

The spoiler is not just for looks: the Hustler Super Z™ is fast, at a scorching 15 miles-per-hour, the fastest z-rider on the market. While the Super Z makes quick work of even the largest, most obstacle-prone mowing jobs, it delivers a professional-grade cut, a finish that belies the speed of the mowing. From the toughest front caster forks in the industry to the day-long 14-gallon fuel tank, the Super Z has been built for speed. Large Hydro-Gear hydraulic pumps and White wheel motors draw power from fuel-efficient, high-horse Honda, Kawasaki, or Kohler engines. An oil cooler protects the hydraulics, dramatically extending the system's life at top speed. And – with its wide stance and low, low profile – the Super Z clings goatlike to slopes, stable and sure, as flat-out productive as on the level straightaways.

Like the Super Z, the Hustler Z™ has been built tough in an almost military way. Heavy-gauge rectangular tubing for the mainframe, drive motors mounted to welded steel, roller bearings for the front caster mounts, high-horse engines up to 44 cubic inches, a 12-volt positive-engagement starter, dual hydrostatic traction drive with big Hydro-Gear pumps and Ross high-torque wheel motors – the components of a mower with long, hard use on its mind. No other mowers can match Hustler Zs in the unbending strength of their frames, front forks, decks, and blade spindles, each supported by warranties with serious teeth.

Hustler Zs are quick out of the shop too, with the simplest maintenance requirements in commercial mowing. As you'd expect with a Hustler, the warranties are anything but fast – a full two-year bumper-to-bumper deal, parts and labor, with a lifetime guarantee backing up the frame and leading edge of the deck. Even the hydraulic hoses and fittings are guaranteed to never leak!

That loud boom which often accompanies the arrival of Super Zs in the neighborhood?

Pay it no mind.



The XR-7 Deck with attached mulching kit for flawless dual side trimming.



A rocketing 15 mph top-speed on the Super Z

Hydraulic oil cooler, cooling fan and spoiler on Super Z

BE SIMPLE. BE STRONG.

The Hustler Zs bring along all the toughness, all the durability, all the proven reliability of legendary Hustler engineering. A patented automatic park-brake system makes the mower's starting sequence much more natural and instinctive, and it greatly enhances the mower's overall safety: easier engagement of brakes on slopes, simpler and safer dismounts with the engine running. When the steering levers are placed in neutral position (folded out), the automotive-style drum brakes are engaged. Simplicity itself!

Everything about the Hustler Zs have been designed for trouble-free long-term performance. The Hustler Zs are simply the strongest, most ruggedly durable midmount riders ever built.



BRAKE OFF

BRAKE ON

For more information: www.hustlerturf.com **HUSTLER**

HUSTLER TURF EQUIPMENT • HESSTON, KANSAS 67062 • 1-800-395-4757



INTRODUCING XR-7™ MOWING DECKS

Up top, the Super Z looks sharp – a fine-looking piece of machinery, but down below, where the work takes place, the Super Z is a picture of ingenuity. Here, the new XR-7™ mowing platform reveals it's incredible simplicity, durability, and patent-applied-for innovations that make this the finest mowing deck ever put into the grass.

Compare the Hustler's construction to the competitor's. Hustler has put more steel in all the right places. And we stand behind it with a lifetime warranty on the leading edge of the deck – the part of the deck that takes the most abuse. Spindle-mount areas are nearly 1/2-inches thick!

Versatility? The XR-7 deck will mow in any condition, any time of day and provide the finest finished appearance every time! We've spent over two years testing these new decks in every season, every condition, every grass type, every part of the country where grass is mowed.

The heavily-reinforced front edge of the XR-7 mower still carries the famous Hustler lifetime warranty on the leading edge of the deck.

Deck is configurable for different mowing conditions – fine cut, rough cut, mulch, even Bahiagrass is no match for the Hustler XR-7 deck.

An extra-wide discharge opening allows faster processing of material and a beautiful finished appearance to any lawn.

Molded rubber discharge chute is tough where it counts but gentle on objects.

Air Control Baffles keep dirt and debris under the deck in dry, dusty conditions – not on the operator. Perfect for mulching or collecting.

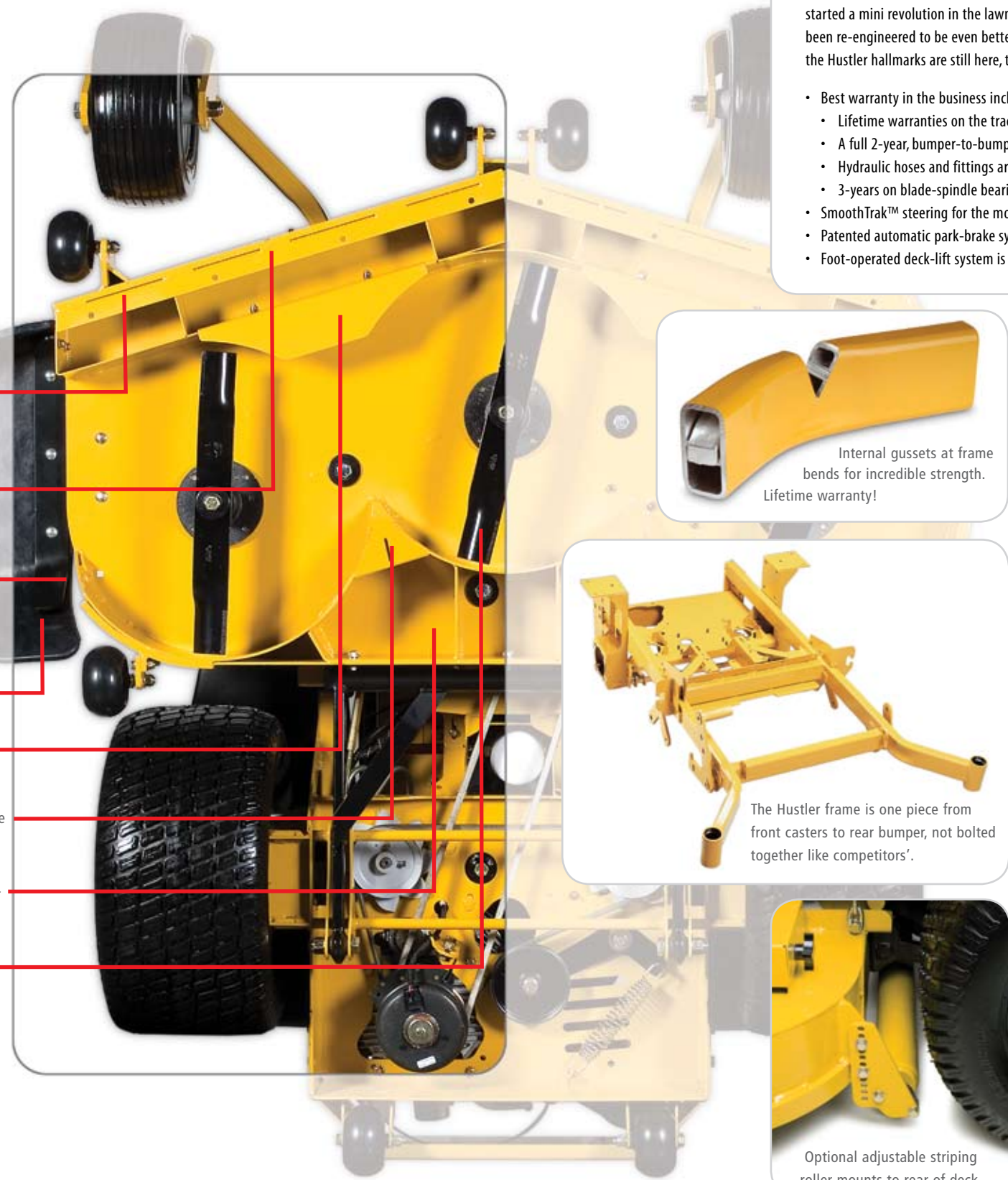
FreeFlow™ triangles (patent applied for) minimize buildup under the deck and improve flow of materials for awesome discharge pattern.

Deck shell is all 7-gauge steel with doublers and triplers (nearly 1/2" thick!) in spindle-mount areas.

Fusion™ blades stay sharper longer. As much as 2 to 3 times longer than ordinary blades.



The FreeFlow™ triangles nearly eliminate clumping under the deck. The typical deck clumps where the backside wrappers meet, by re-designing this junction, the grass has nowhere to accumulate.



Internal gussets at frame bends for incredible strength. Lifetime warranty!



The Hustler frame is one piece from front casters to rear bumper, not bolted together like competitors'.



Optional adjustable striping roller mounts to rear of deck.

WHAT'S NEW?

If it isn't broken, why mess with it? Why, to make it better, of course.

When the Hustler Z was introduced and then the Super Z shortly thereafter, they started a mini revolution in the lawn care industry. Now, for 2006, the Hustler Zs have been re-engineered to be even better with many refinements and improvements. All the Hustler hallmarks are still here, though.

- Best warranty in the business including:
 - Lifetime warranties on the tractor frame and the leading edge of the deck
 - A full 2-year, bumper-to-bumper warranty – parts and labor!
 - Hydraulic hoses and fittings are guaranteed to never leak
 - 3-years on blade-spindle bearings and front-caster-fork bearings
- SmoothTrak™ steering for the most nimble yet smooth steering on a z-rider
- Patented automatic park-brake system built into the steering levers
- Foot-operated deck-lift system is much easier to use than hand-operated systems

- Separate choke lever with stainless steel cables for smoother operation
- Rear-discharge decks with patent-applied-for counter-rotating blade design
- Higher-torque electric clutch
- Faster reverse speed
- Improved, more reliable electrical system
- More durable wheel motors – as much as 3 times the life
- State-of-the-art powder-coat paint for the best finish in the industry
- Improved pump belt life
- Easier-to-service spindle bearings – three year warranty
- Improved design of deck-lift foot pedal for easier access to deck
- Stainless-steel throttle and choke cables for smoother operation
- Reduced grease points from 13 to 9
- **New** mulch-kit design (patent applied for) that is the easiest to install in the industry
- Longer-life idler springs
- Optional rear anti-scalp wheels
- Easier blade servicing
- Serviceless deck idler
- Improved bearings in deck and pump idlers
- **New!** Molded-rubber discharge chute – tough, yet gentle on objects
- More durable deck cover knobs

New! XR-7™ mowing decks! – mow anywhere, anytime! – for superior quality of cut, unmatched versatility, awesome distribution — all this and the option of a striping roller

New! Optional Flex Fork™ – shock-absorbing front caster forks (not shown)

Fusion™ **New!** Fusion™ blades for less sharpening



Spring-assisted, foot-operated deck lift for easy adjustment of cutting height or for quick adaptation to curb hopping and trailering

Customizable rear bumper

Optional 9-bushel BAC-VACT™ catcher

Heavy-duty, remote air cleaner – standard equipment

More engine options including liquid-cooled, EFI, and diesel

New fuel tanks with site gauge

Wider, angled fuel neck for easier filling

Increased fuel capacity to 14.4 gallons

New digital hour meter

- Improved pump belt life
- Easier-to-service spindle bearings – three year warranty
- Improved design of deck-lift foot pedal for easier access to deck
- Stainless-steel throttle and choke cables for smoother operation
- Reduced grease points from 13 to 9
- **New** mulch-kit design (patent applied for) that is the easiest to install in the industry
- Longer-life idler springs
- Optional rear anti-scalp wheels
- Easier blade servicing
- Serviceless deck idler
- Improved bearings in deck and pump idlers

- Optional ROPS (not shown)
- Light-colored seat to keep your seat cooler

Height-adjustable steering levers for increased comfort

Optional suspension system for standard seat

New! More comfortable, bigger grips on steering levers

Seat pan has been raised for improved operator comfort

SmoothTrak™ steering – the smoothest, most responsive steering on the market!

Patented, built-in automatic park brake system

Optional hydraulic deck lift

54", 60", 72" and **New!** 66" decks

Improved caster fork – dampened to reduce wobble

Improved caster bearings – three year warranty

Internal gusset for incredible strength

New! blade design for better cut and "Wavy" mulching blades for improved performance

Increased leg room



BE STRONG. BE SIMPLE. BE SERVICEABLE.

Hustler Zs and Super Zs have already built a reputation for the easiest maintenance in the industry: fast, clean, and simple. With no daily lube points and fast, easy accessibility to all maintenance areas, the Hustler Z keeps you on the job, out of the shop, in the money.

- Maintenance-free sealed bearings on the front-caster-wheel forks and the biggest ball joints in the industry, bar none
- Hinged foot and seat pans for easy service access
- Single-belt drive for reduced maintenance (compare with dual-belt drive on most competitive models.)
- Engine service points located at the rear of the machine - oil filter and drain can be serviced with a single pan, with no danger of fluids spilling on belts
- Sealed bearings on the spindle shaft – lubrication required only once a year
- Simplicity rules! Raise the seat pan and deck pan and marvel at the lack of "stuff"!



Stainless-steel high-pressure lines with Parker Seal-Lok™ O-Ring Face Seal Fittings — hydraulic hoses & fittings are guaranteed for a lifetime to never leak!

